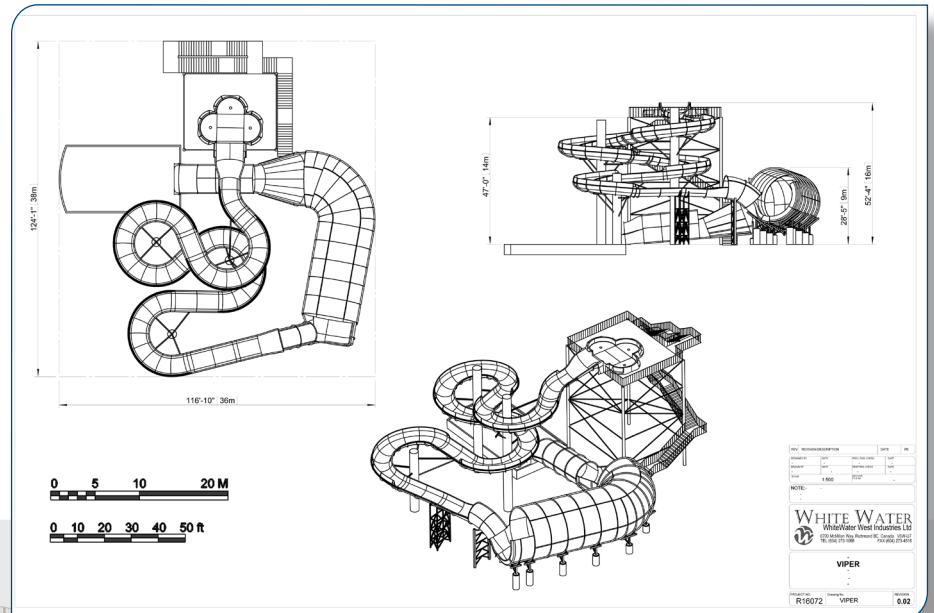




WhiteWater's latest innovation takes guests on a multi-sensation of twists, turns and drops.

Serpentine through the Viper's high-banking turns before reaching the heart-pounding drop into a 6.1m (20 ft) MEGAtube propelling riders vertically from side to side.

MEGAtube technology allows for 'flume in flume' capability creating a one-of-a-kind attraction and ride experience.



Patent Pending

Viper™

Product Features:

- one 6.1m (20 ft) diameter MEGAtube with 2.1m (7 ft) wide family raft ride
- three person raft ride
- conveyor system optional
- ability to add additional MEGAtube sections
- combine with another signature attraction on the same tower and conveyor system
- strong visual and spectator appeal
- customized theming options

Facts & Figures

Height: 16m (52.4 ft)

Length: 36m (116.10 ft)

Width: 38m (124.1 ft)

Slide Path: 137m (450 ft)

Max Speed: 29 kph (18 mph)

Capacity: 720 persons per hour

Flow Rate: 3000 USgpm (189 l/s)

Vehicle: 3 person circular raft

